

Meeting the needs

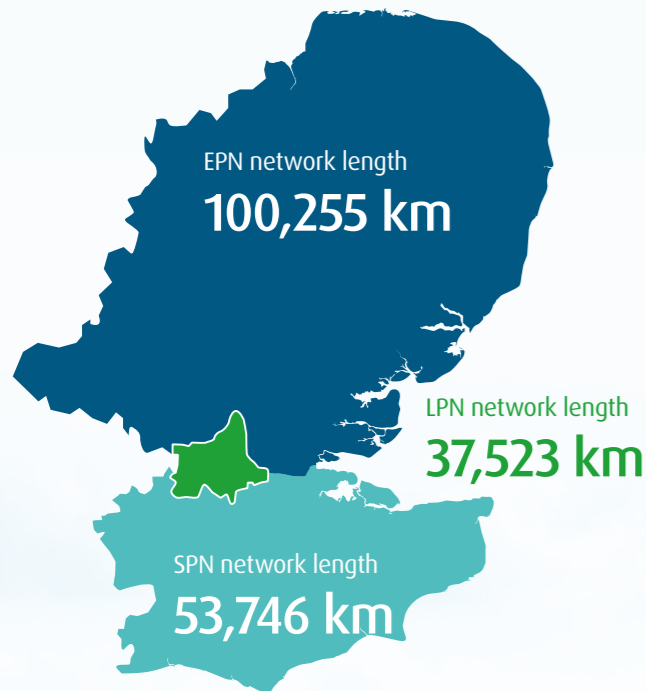
# of our 8.5 million customers

We are the UK's biggest electricity distributor, ensuring that the electricity infrastructure is in place to serve our customers safely, reliably, efficiently and sustainably.

We operate in London, the East and South East of England, serving 19 million people in an area of over 29,000 square kilometres. We are facilitating the Net Zero transition by helping to make sure our network is ready for the increase in electric vehicles (EVs) and other low-carbon technologies.

We aim to meet our customers' evolving needs by improving our services, particularly supporting those in vulnerable circumstances. These are our priorities and we go above and beyond to achieve them on behalf of the communities we serve.

## Our network areas



### Eastern Power Networks (EPN)

We deliver power to the East of England region which extends from the Wash in the east, to North London and the Thames estuary, encompassing a diverse range of urban and rural areas as well as a huge coastline.

### London Power Networks (LPN)

We look after the electricity network for people who live and work in Inner London, including the responsibility for delivering power to iconic buildings and businesses, as well as high-profile international events throughout the year.

### South Eastern Power Networks (SPN)

We serve South London, Kent, East Sussex and parts of Surrey and West Sussex, covering a rich variety of customers and locations.

### UK Power Networks Services

UK Power Networks Services is the commercial arm of UK Power Networks that manages private energy networks and delivers major national power infrastructure projects for customers on a competitive, commercial basis.



## The energy ecosystem

